

NEW



Planet gear for extremely long tube life

Reliable and precision

Compact



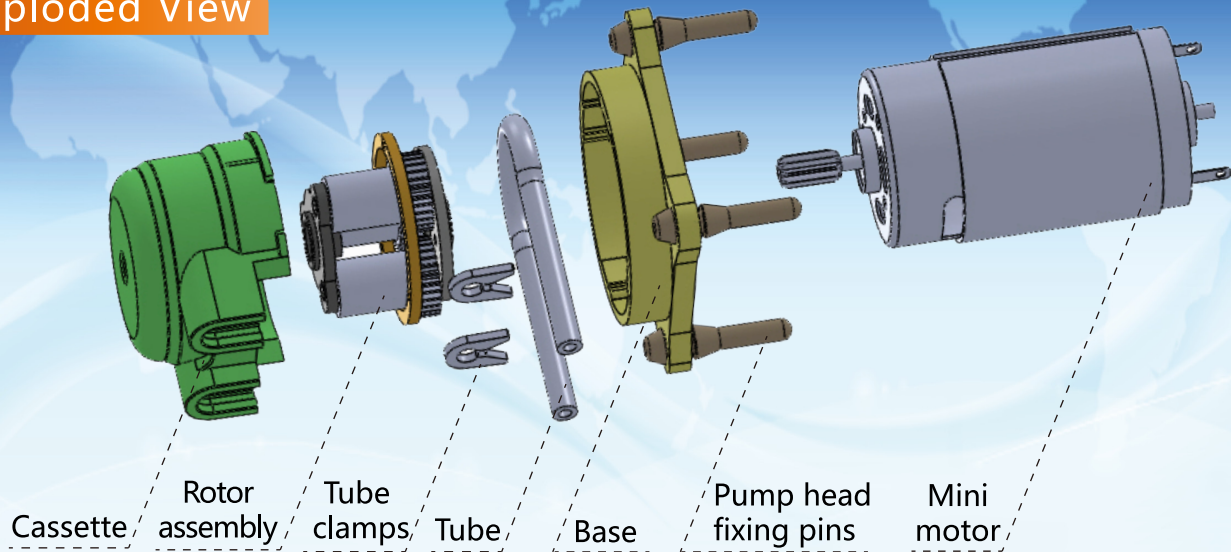
PT10

Ultra Mini Peristaltic Pump

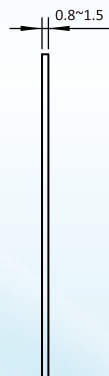
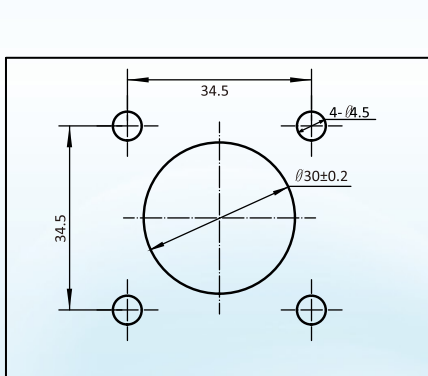
Product code : M40031

Product code : M40040 (with speed control panel)

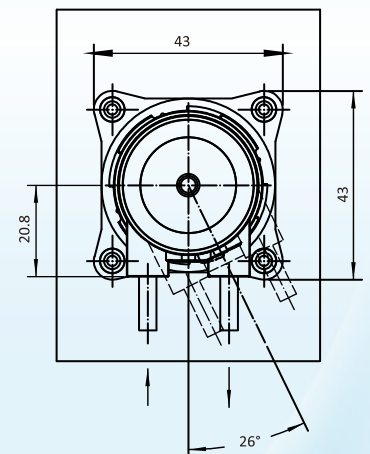
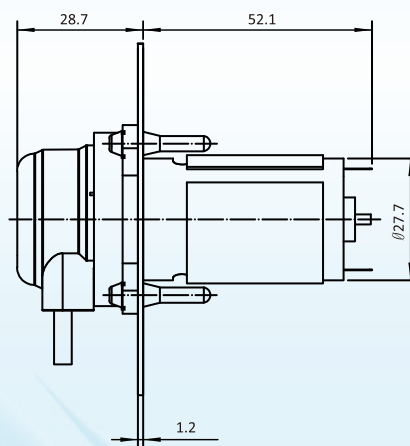
Exploded View



Mounting dimensions



Dimension



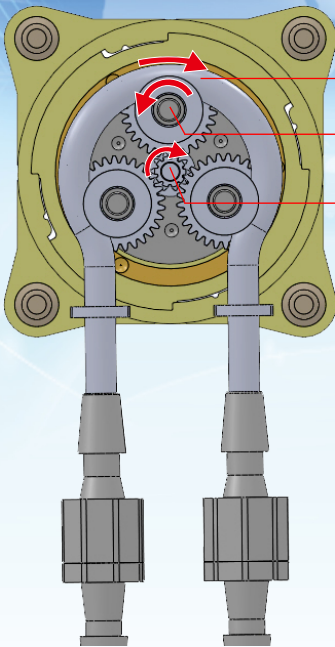
Specifications

Product code	M40031
Pumphead Model	PT10
Max. speed	700RPM $\pm 10\%$
Power	3~24V DC , 12V DC Recommended
Max. Current	250 mA
Environment	-10°C ~ 50°C , RH < 95%
Tube size	1.0 wall thickness , Max size:3×1
Back pressure	< 0.2MPa
Operating noise	< 52dB
Motor life	> 1500hours
Material Specifications	UL/CE/RoHS certificates

Features

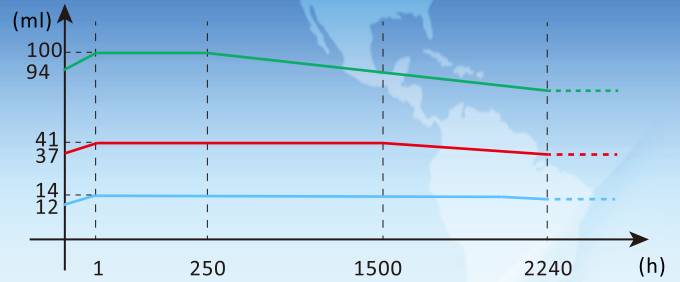
- 1) All parts are made of super engineering plastic that has excellent heat and corrosion resistance
- 2) Autoclaveable parts ensure the hygiene grade operation
- 3) Planet gear brings zero friction and extends tube life greatly
- 4) Easy tube loading and pump head installation ; Four-direction Mounting enabled
- 5) Reliable motor operation , noise free
- 6) Speed control unit option for special needs

Planet Gear System

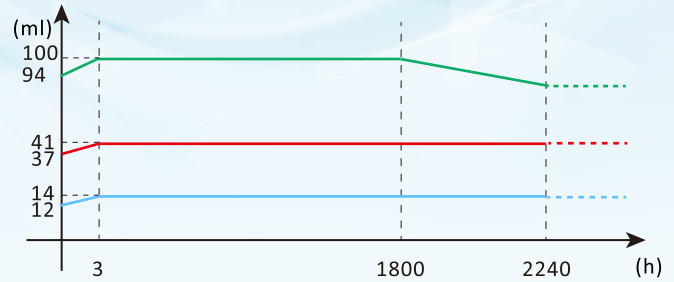


The wheels touch and press tube in rolling, friction free
 Three bigger wheels are drove by pinion to roll
 DC motor drive rotates the centre pinion

Tube Life Graph

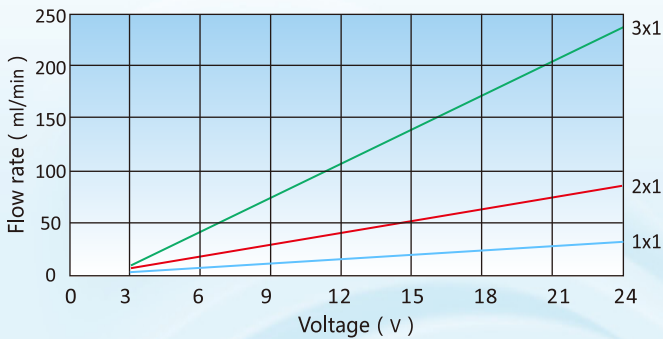


Condition : Curves are obtained from continuous pumping water with silicon tube at 20°C , 12V.



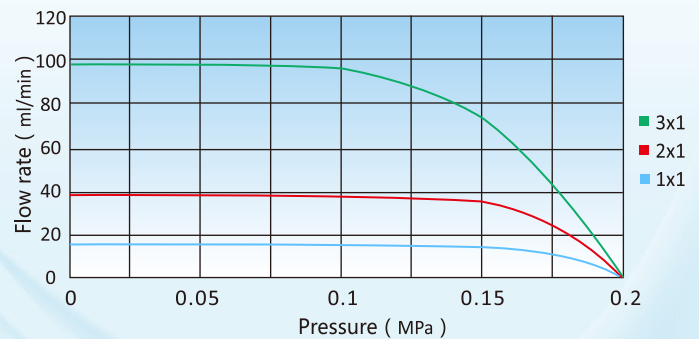
Condition: Curves are obtained from intermittent pumping (interval : 5 min) water with silicon tube at 20°C , 12V

Flow rates against voltage



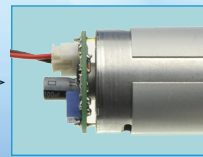
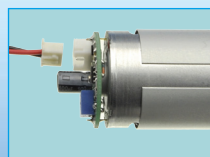
Note: Use speed control panel to adjust the flow rate

Pressure Performance Curve



Speed control panel installation and debugging

The speed control panel has been welded on DC motor before delivery. Just follow below operations:



Insert the terminals into the fitting position on speed control panel

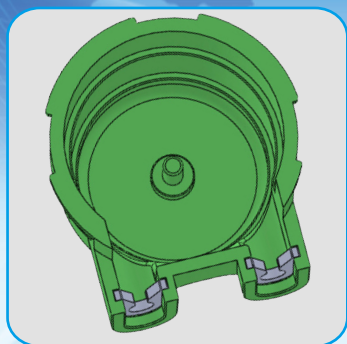


LOW SPEED

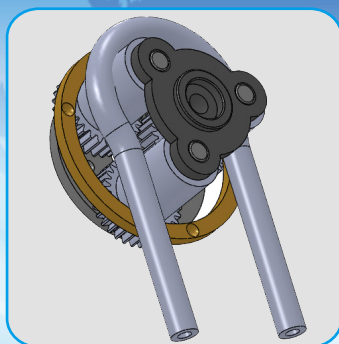
voltage adjustor

Gain the desired flow using screwdriver to adjust the voltage

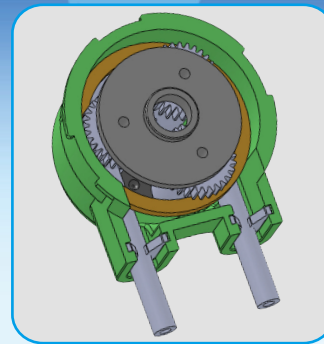
Tube loading



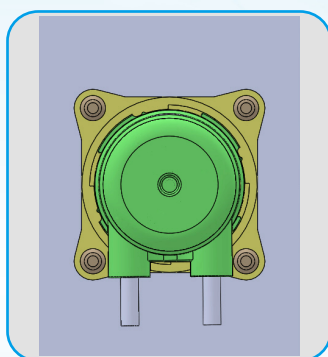
Insert the tube clamps to cassette



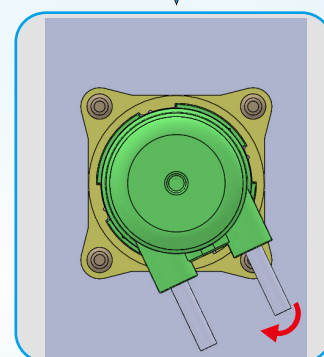
Wrap the tube over the rollers



Center the rotor assembly into cassette, clip the tube via clamps



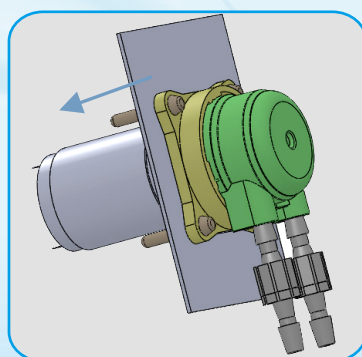
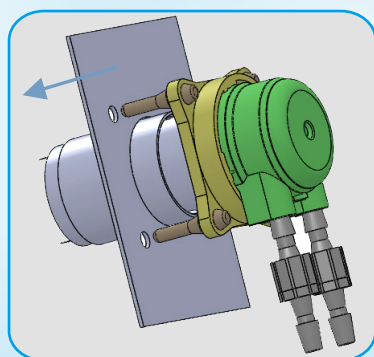
Attach the cassette to the base via screwing in arrow direction



Align the cassette with the mounting holes on the base

Note : Four-direction mounting of cassette is supported

Pump head installation



1. Connect the pump head base to mounting board by aligning the pins with the fixing hole
2. Pull the fixing pins to secure in the direction of the arrow (figure2) to fix the base to mounting board

Applications

Biochemistry analyzer

Blood-cell analyzer

Sampling unit of COD online monitor